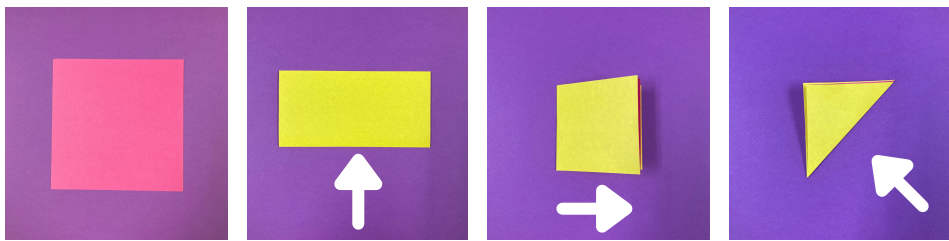
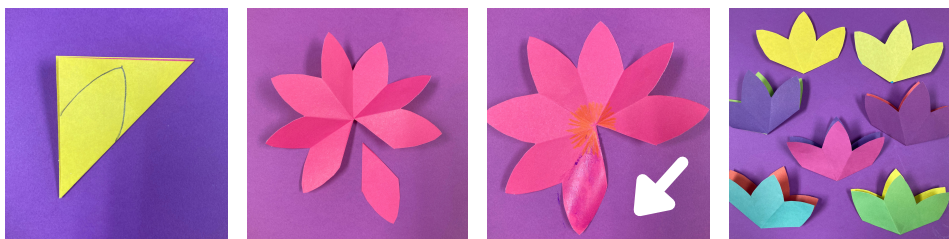


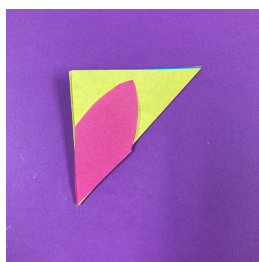
# Pop-Up Card Instructions



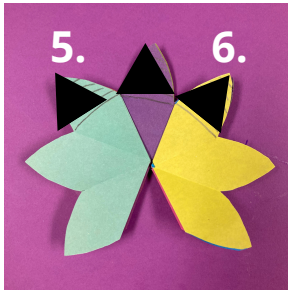
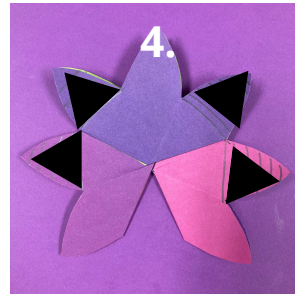
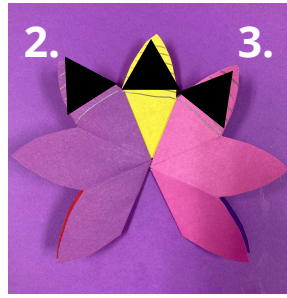
Start with one piece of origami paper. Fold the bottom to the top, then fold the left to the right, and then fold the bottom right corner to the top left corner.



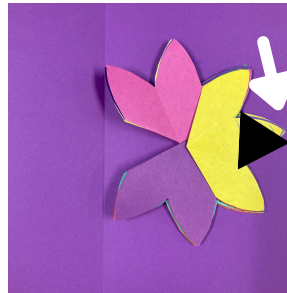
Draw a petal shape on the folded triangle and cut it out. Unfold your flower and carefully cut off one of the petals. Decorate your flower however you'd like, then put glue on the petal to the left of the cut out and pull the right petal over on top of it to reconnect your flower. Fold it in half and repeat 6 more times until you have 7 total flowers.



Save the petal that you cut out from your first flower and use it as a template for your remaining flowers to help make them as even as possible!



Glue your pieces together. Apply glue to the areas marked with black triangles and add your pieces one by one. Remember to only glue the tips of the petals, not the entire piece!



Apply glue to piece number 7 and attach it to the inside of your folded card. Make sure that the entire flower is completely on one side of the card's crease! Add glue to the top of piece number 1 and close the card. Your flower is now attached to both sides. Once it dries, open it up to see your pop up flower! Decorate the rest of your card however you'd like!